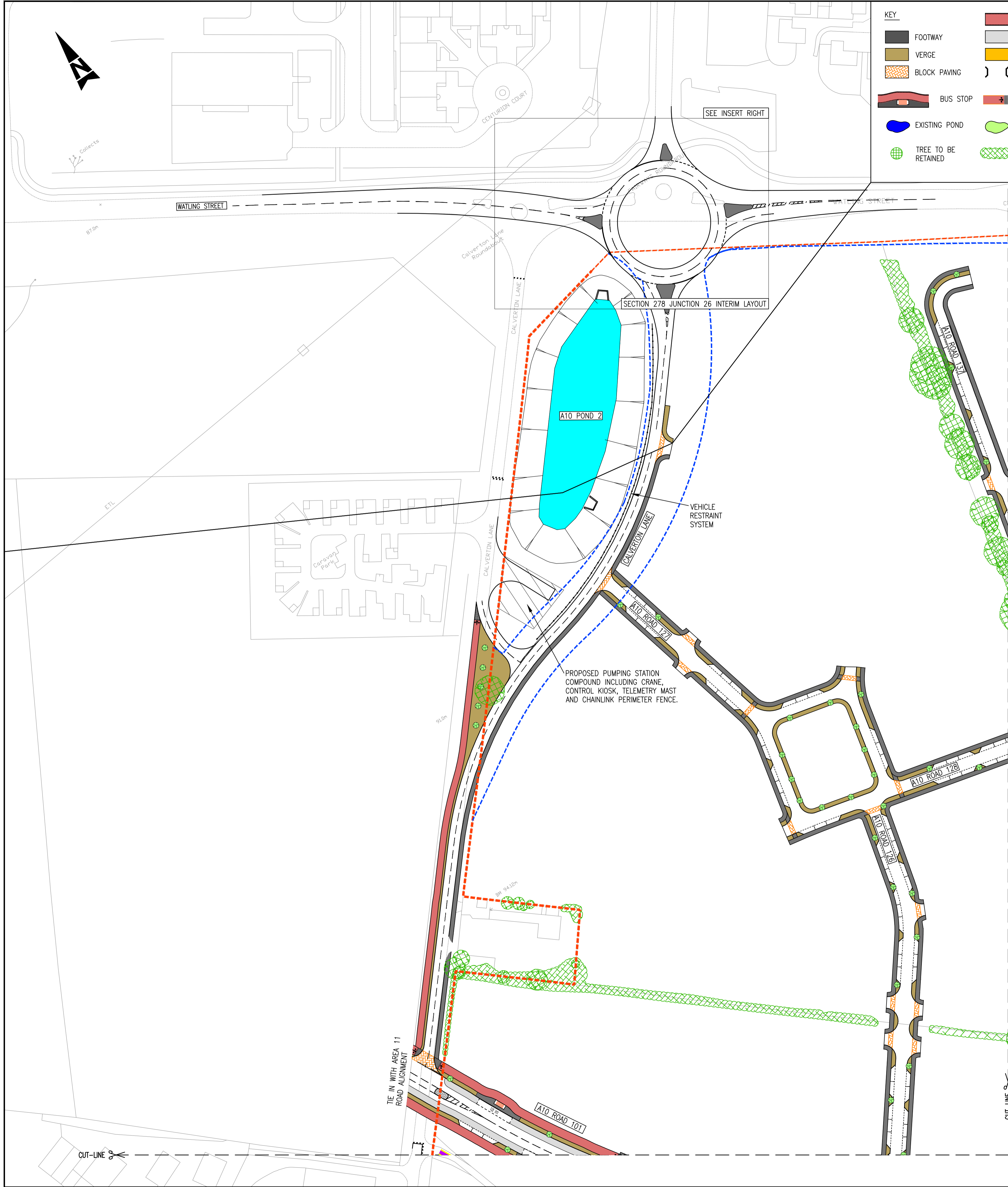


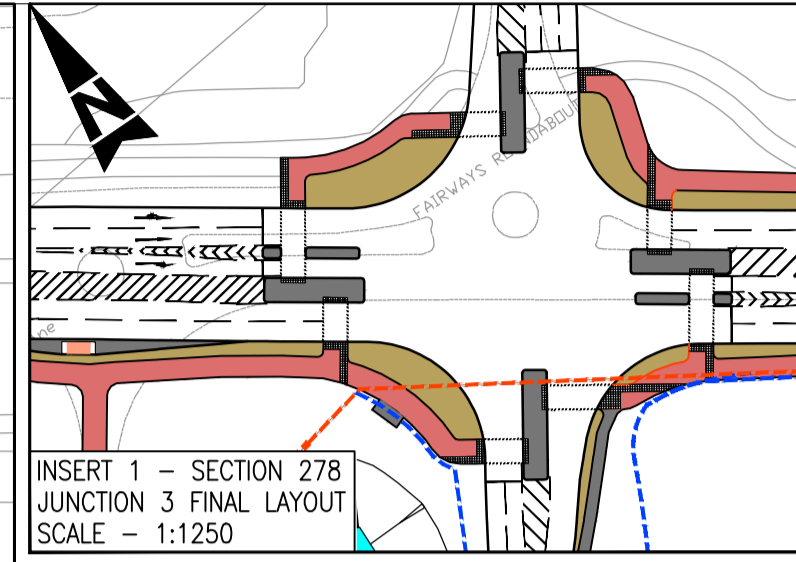
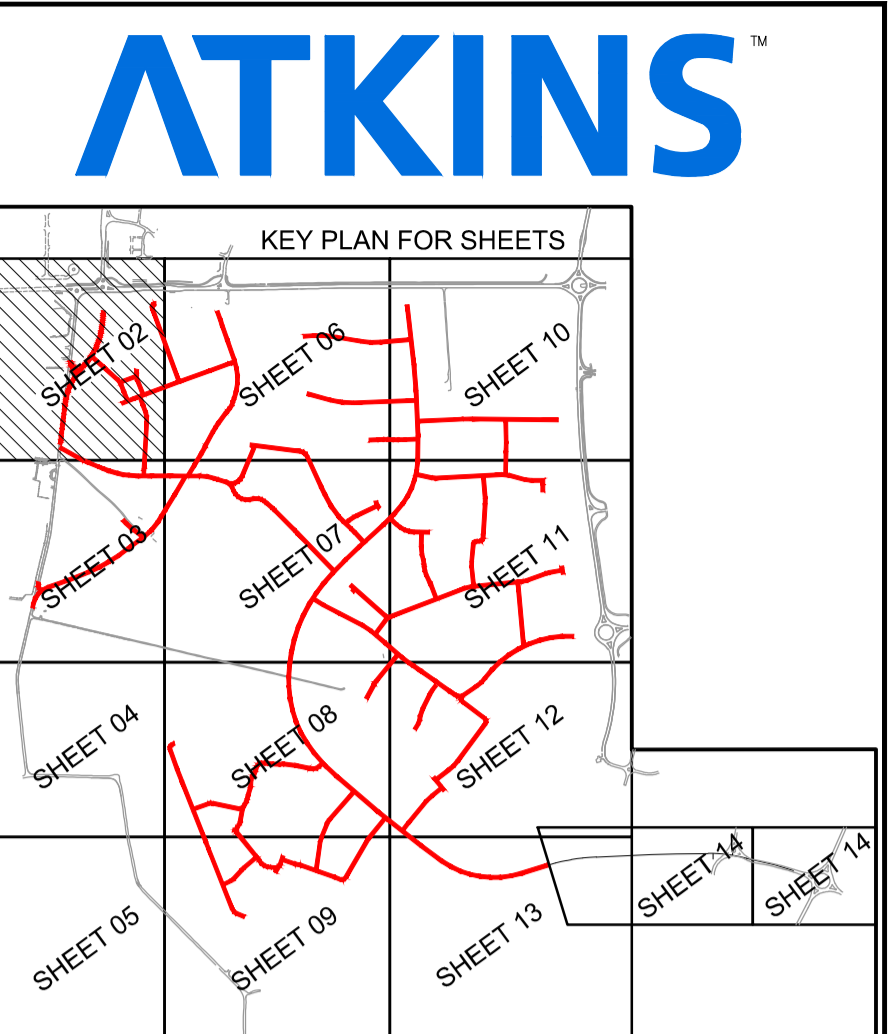
DO NOT SCALE

A1



KEY

- FOOTWAY
- VERGE
- BLOCK PAVING
- BUS STOP
- EXISTING POND
- TREE TO BE RETAINED
- REDWAY (INCLUDING 0.5m WOBBLE STRIP WHERE NECESSARY)
- BUS LANE
- BRIDLEWAY CROSSING AREA
- CULVERT HEADWALLS
- REDWAY CROSSING
- PROPOSED DRY POND
- HEDGE TO BE RETAINED
- SECTION 38 SITE BOUNDARY
- NEW HIGHWAY BOUNDARY ON SITE
- EXISTING HIGHWAY BOUNDARY ON SITE
- EXISTING FIELD DITCH TO BE RETAINED
- PROPOSED / IMPROVED WATERCOURSE
- BADGER/NEW TUNNELS
- EXISTING PUBLIC FOOTPATH (FROM DEFINITIVE MAP)
- EXISTING PUBLIC BRIDLEWAY (FROM DEFINITIVE MAP)
- PUBLIC FOOTPATH DIVERSION
- PUBLIC FOOTPATH TO BE EXTINGUISHED
- BUILDING TO BE RETAINED
- PROPOSED WET POND
- INDICATIVE TREE PIT



- NOTES**
- FOR LOCATION PLAN REFER TO DRAWING NUMBER 5057743/A10/HW/GA/000.
 - FOR DETAILED LAYOUTS REFER TO THE MASTERPLAN DRAWINGS.
 - FOR DETAILS OF ENVIRONMENTAL EARTHWORKS REFER TO LANDSCAPE DRAWINGS.
 - FOR DETAILS OF ENVIRONMENTAL WORKS REFER TO ECOLOGY CONSULTANTS DRAWINGS.
 - FOR DETAILS OF BADGER AND NEW TUNNELS REFER TO ECOLOGY CONSULTANTS DRAWINGS.
 - ACCESS POINTS TO INDIVIDUAL PARKING COURTS WILL BE SHOWN ON INDIVIDUAL DEVELOPERS RESERVED MATTERS APPLICATIONS.
 - TREE PITS AND PARKING SPACES SHOWN ARE INDICATIVE AND ARE LIKELY TO CHANGE.
 - ALL EXISTING TREES NOT SHOWN TO BE REMOVED.
 - ALL EXISTING DITCHES TO BE FILLED AND MADE REDUNDANT UNLESS NOTED OTHERWISE.

SAFETY, HEALTH AND ENVIRONMENTAL INFORMATION

IN ADDITION TO THE HAZARDS/RISKS NORMALLY ASSOCIATED WITH THE TYPES OF WORK DETAILED ON THIS DRAWING, NOTE THE FOLLOWING SIGNIFICANT RESIDUAL RISKS

CONSTRUCTION	MAINTENANCE/CLEANING	USE	DECOMMISSIONING/DEMOLITION
NONE	NONE	NONE	NONE

A	APPROVAL (REV H)	150711	SC
A	APPROVAL (REV G)	040711	SC
A	APPROVAL (REV F)	240611	AM
A	APPROVAL (REV E)	200611	SC
P	COMMENT - PHASE 1 (REV D)	040408	P

Stat	Purpose of Issue	Date	Auth
H	INTERIM JUNCTION ADDED	ARP 150711	WDR SC
G	BELLMOUTHS, REDWAY & FOOTWAY UPDATES	ARP 040711	WDR SC
F	KEY PLAN UPDATED	Nrj 240611	WDR AM
E	LAYOUT AMENDED, S278 JUNCTIONS ADDED	ARP 200611	WDR SC
D	ROADS, TREEPITS, DRAINAGE, PHASES	Nrj 310308	DS SC

Atkins Limited
 Consulting Engineers,
 The AXIS
 10 Holliday Street
 Birmingham, West Midlands B1 1TF
 Tel: (0121) 483 5000
 Fax: (0121) 483 5252
 www.atkinsglobal.com

REDLAWN LAND LIMITED

Project
MILTON KEYNES WESTERN EXPANSION AREA

Title
AREA 10 INFRASTRUCTURE GENERAL ARRANGEMENT FOR RESERVED MATTERS SHEET 2 OF 14

Sheet Size	Original Scale	Designed/Drawn	Checked	Authorised
A1	1:1000	SD	GS	IGS
Status	Drawing Number	Date	Date	Date
A	5057743/A10/HW/GA/002	131207	131207	131207
Rev				
				H

This map is based on Ordnance Survey material with the permission of Ordnance Survey on behalf of the Controller of Her Majesty's Stationery Office.
 © Crown Copyright. Unauthorised reproduction infringes Crown copyright and may lead to prosecution or civil proceedings
 Gallagher, Licence No.100027072